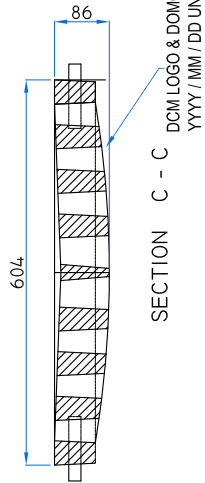
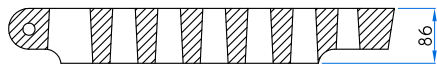


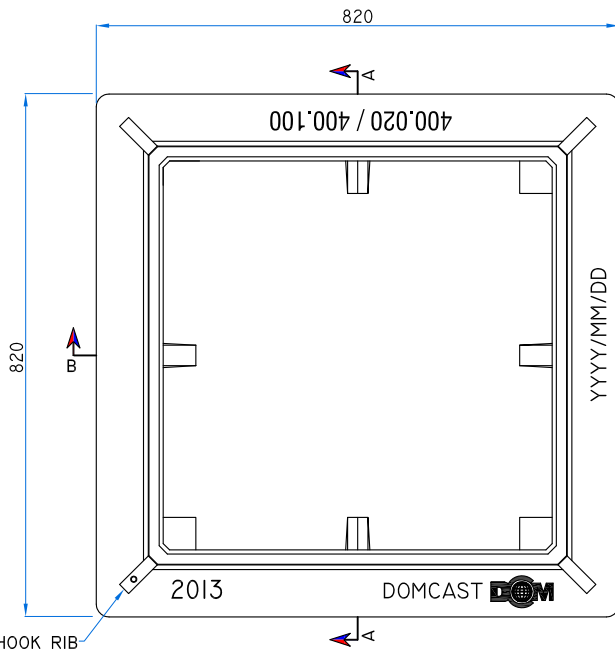
GRATE PLAN



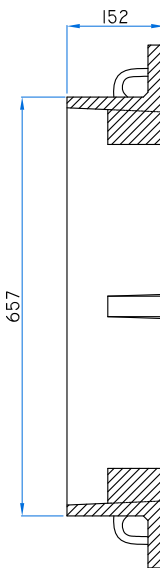
SECTION C - C  
DCM LOGO & DOMCAST,  
YYYY / MM / DD UNDERSIDE.



SECTION D - D

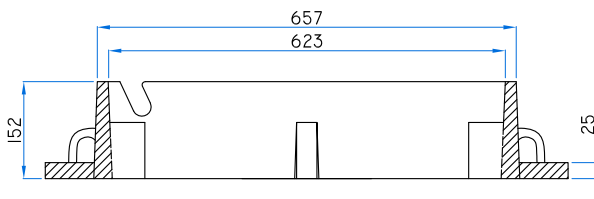


FRAME PLAN



SECTION A - A

HOISTING HOOK RIB  
TYP. OPSD 400.001



SECTION B - B



REVISION

DATE

SIGN

ALL DIMENSIONS ARE IN MM

SCALE : N.T.S.

REV.[0] :

MATERIAL : GREY CAST IRON

REV.[1] :

GRADE : ASTM A48 CLASS 30B

REV.[2] :

COATING : BLACK BITUMEN PAINTED (LEAD FREE)

REV.[3] :

LOADING :

REV.[4] :

WEIGHT : 460 LBS ( 209 Kgs)

DRAWN BY :

CHECKED BY :

APPROVED BY :



DomCast Components & Assemblies,  
CANADA

ITEM DESCRIPTION :

CAST IRON, SQUARE FRAME WITH SQUARE FLAT GRATE FOR  
CATCH BASINS, HERRING BONE OPENINGS.

DRAWING NO :

OPSD 400.020