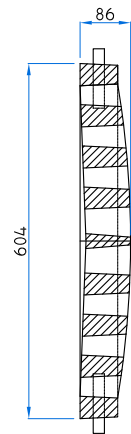
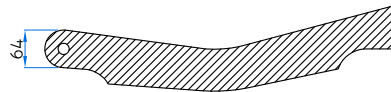


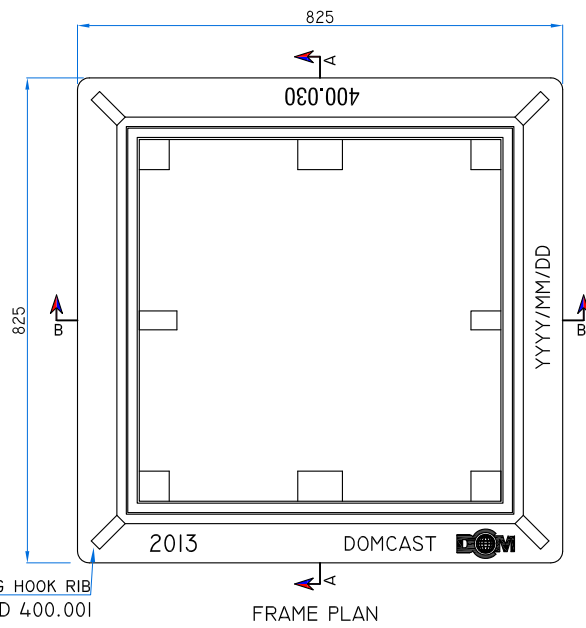
GRATE PLAN



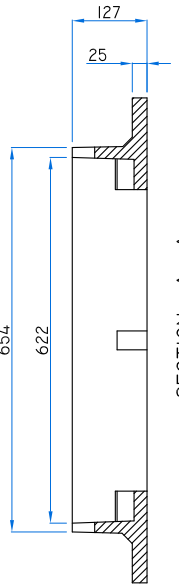
SECTION C - C
DCM LOGO & DOMCAST.
YYYY / MM / DD UNDERSIDE.



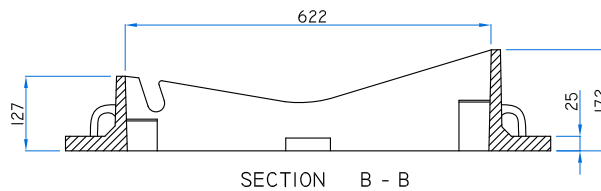
SECTION D - D




FRAME PLAN



SECTION A - A



SECTION B - B

REVISION	DATE	SIGN	ALL DIMENSIONS ARE IN MM MATERIAL : GREY CAST IRON GRADE : ASTM A48 CLASS 30B COATING : BLACK BITUMEN PAINTED (LEAD FREE) LOADING :	SCALE : N.T.S.
REV.[0] :			WEIGHT : 480 LBS (218 Kgs)	
REV.[1] :			ITEM DESCRIPTION : CAST IRON,SQUARE FRAME WITH SQUARE V GRATE FOR CATCH BASINS,HERRING BONE OPENINGS	DRAWING NO : OPSD 400.030
REV.[2] :				
REV.[3] :				
REV.[4] :				
DRAWN BY :	CHECKED BY :	APPROVED BY :		
 DomCast Components & Assemblies, CANADA				