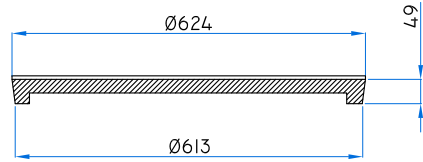
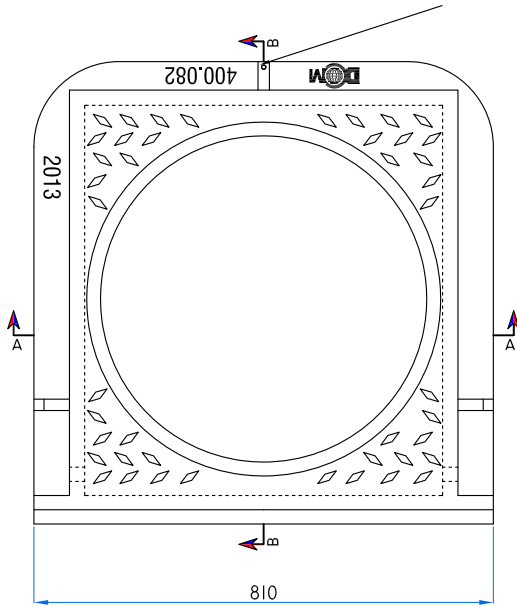


PLAN OF COVER



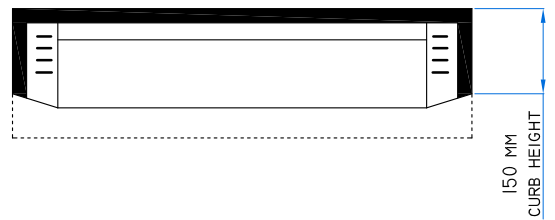
SECTION C-C

HOISTING HOOK RIB
TYP. OPSD 400.001

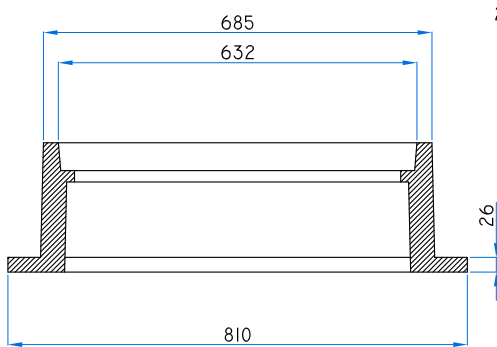


PLAN

TOP OF CURB OR SIDEWALK

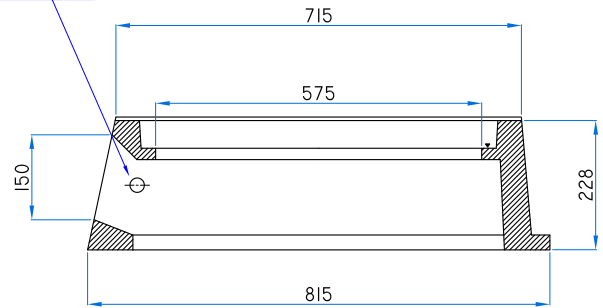


CURB ELEVATION



SECTION A-A

2 NOS. Ø 25.4 MM HOLE



SECTION B-B



REVISION

DATE

SIGN

ALL DIMENSIONS ARE IN MM

SCALE : N.T.S.

REV.[0] :

REV.[1] :

REV.[2] :

REV.[3] :

REV.[4] :

MATERIAL : GREY CAST IRON

GRADE : ASTM A48 CLASS 30B

COATING : BLACK BITUMEN PAINTED (LEAD FREE)

LOADING :

WEIGHT : 460 LBS (209 KGS)

DRAWN BY :

CHECKED BY :

APPROVED BY :



DomCast Components & Assemblies,
CANADA

ITEM DESCRIPTION :

CAST IRON, RAISED CURB INLET FRAME WITH COVER
FOR CATCH BASINS OUT OF ROADWAY

DRAWING NO :

OPSD 400.082