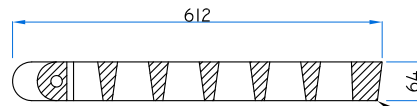
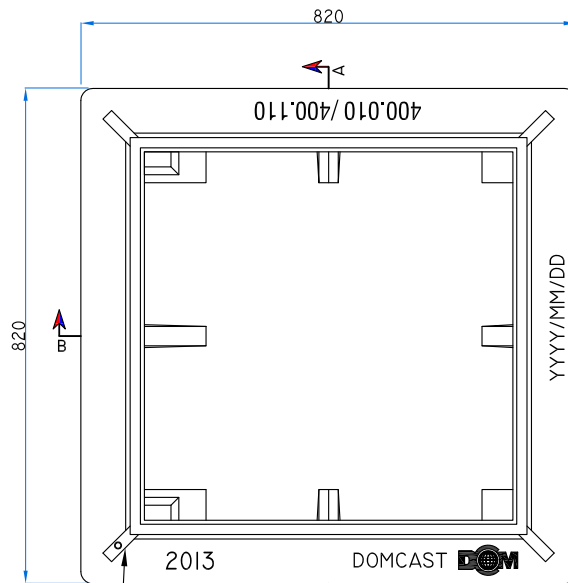


19 MM DIA HINGE PIN, TYP  
GRATE PLAN



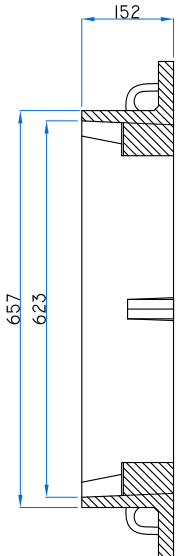
SECTION C - C

DCM LOGO & DOMCAST, YYYY / MM / DD UNDERSIDE.

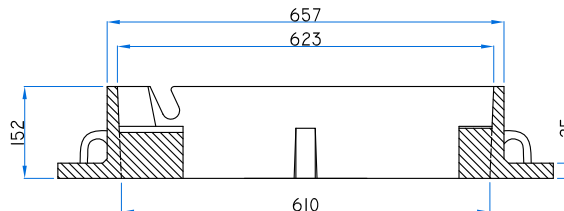


HOISTING HOOK RIB  
TYP. OPSD 400.001


FRAME PLAN



SECTION A - A



SECTION B - B

REVISION	DATE	SIGN	ALL DIMENSIONS ARE IN MM MATERIAL : GREY CAST IRON GRADE : A48 CLASS 30B COATING : BLACK BITUMEN PAINTED (LEAD FREE) LOADING :	SCALE : N.T.S.
REV.[0] :				
REV.[1] :				
REV.[2] :				
REV.[3] :				
REV.[4] :				
DRAWN BY :	CHECKED BY :	APPROVED BY :	WEIGHT : 415 LBS (188 kgs)	
 <b>DomCast Components &amp; Assemblies,</b> CANADA			<b>ITEM DESCRIPTION :</b> CAST IRON, SQUARE FRAME WITH SQUARE OVERFLOW TYPE FLAT GRATE FOR CATCH BASINS, PERFORATED OPENINGS.	<b>DRAWING NO :</b> <b>OPSD 400.110</b>