



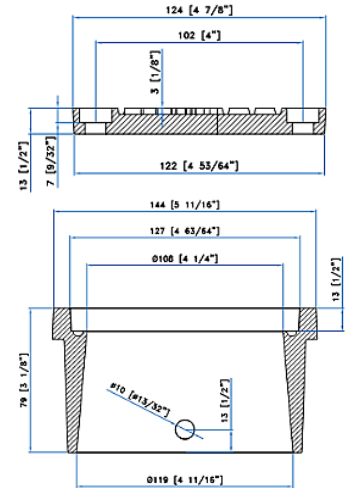
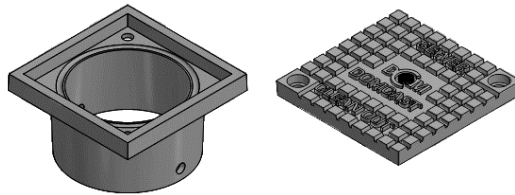
Cleanouts

www.domcastmetals.com

DF44 - 4" Sewer Cleanout

Weight: 9 LBS
Gasketed Cover

Frame No Gasket, PVC Adapter
Required
Covers available in:
Sewer
Water DF44W
Custom

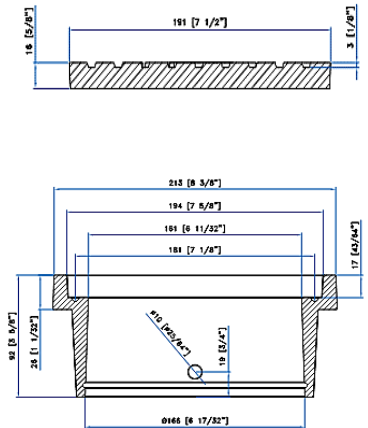
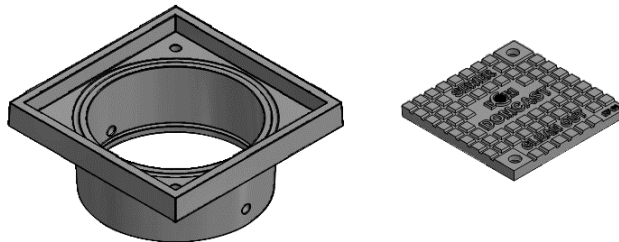


DF66I - 6" Sewer Cleanout

Weight: 20 LBS
Gasketed Cover

Frame Standard Built in
Gasket
No PVC adapter Needed

Covers available in:
Sewer
Custom

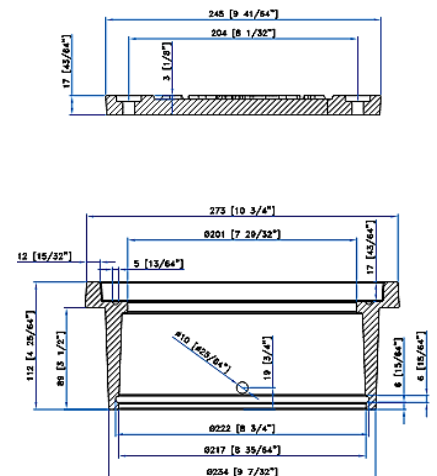
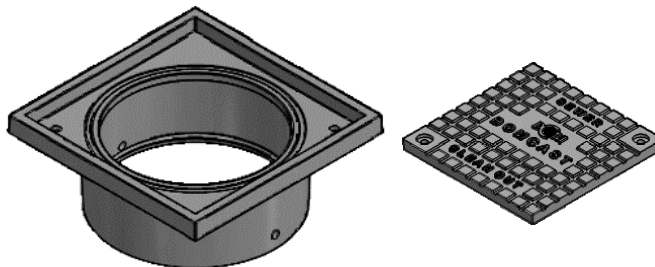


DF88 - 8" Sewer Cleanout

Weight: 40 LBS
Gasketed Cover

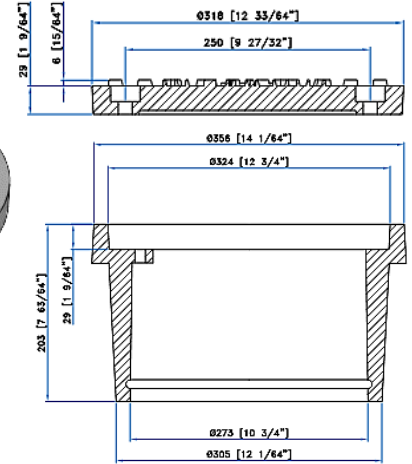
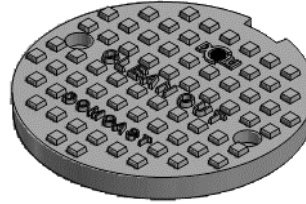
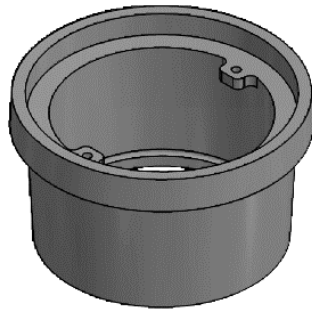
Frame Standard Built in
Gasket

Covers available in:
Sewer
Custom



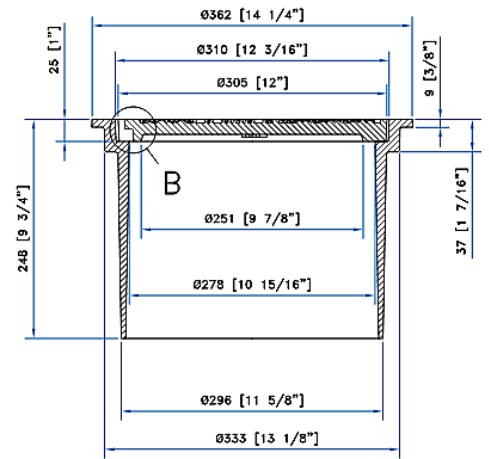
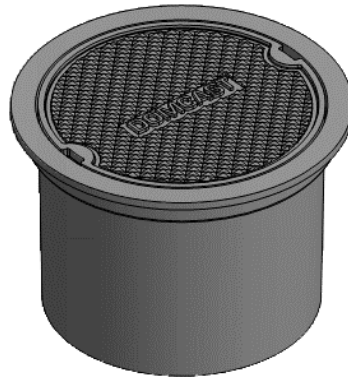
DF1010 - 10" Sewer Cleanout

Weight: 93 LBS
 NO Gasket, Lockable



DF1212 - 12" Filler Box

Weight: 40 LBS
 No Gasket



DomCast Municipal Castings Inc.
Corporate Office and Warehouse
5255 County Road 42, Windsor Ontario, N8N 2M1
P. 519-972-3901
F. 519-972-3918
sales@domcastmetals.com

DomCast Municipal Castings Inc.
Regional Warehouse
2213 North Sheridan Way, Mississauga Ontario, L5K 1A3
P. 519-972-3901
F. 519-972-3918
sales@domcastmetals.com

DomCast Group Regional Offices
Carson City Nevada, Dalian China, Kolkata India
P. 519-972-3901
sales@domcastmetals.com



www.domcastmetals.com